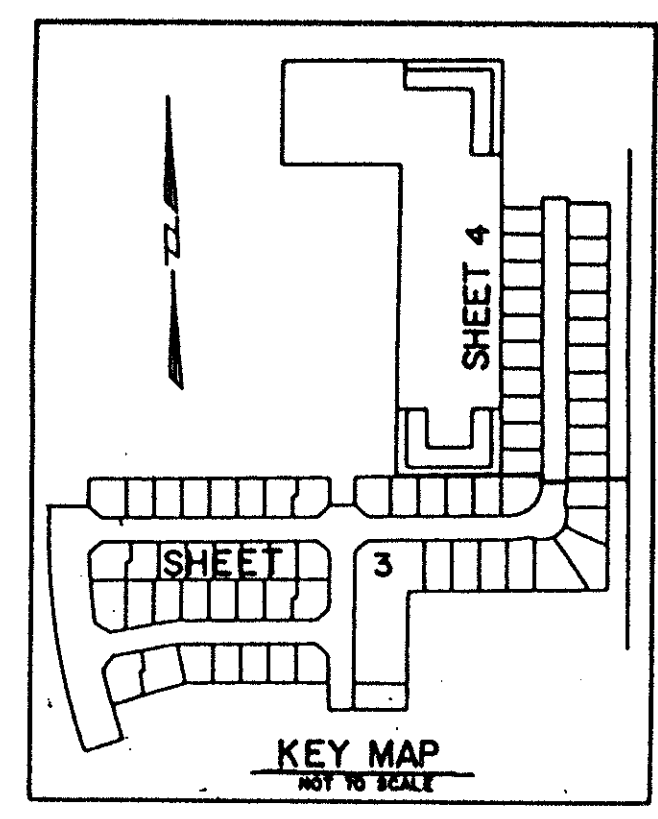


LEE ESTATES PLAT II

A PLANNED UNIT DEVELOPMENT
 LYING IN SECTION 35, TOWNSHIP 44 SOUTH, RANGE 42 EAST,
 PALM BEACH COUNTY, FLORIDA
 SHEET 3 OF 4

STATE OF FLORIDA
 COUNTY OF PALM BEACH
 This Plat was filed for record at _____
 M. this _____ day of _____ 19____
 and duly recorded in Plat Book No. _____
 on Page _____
 DOROTHY H. WILKEN, Clerk of the Circuit Court
 By _____ D.C.



NOT PLATTED

MATCH TO SHEET 4



LANTANA HOMES PLAT 7
 (PLAT BOOK 99, PAGES 76 & 77)

LEE ESTATES PLAT I
 (PLAT BOOK 69, PAGES 109-111)

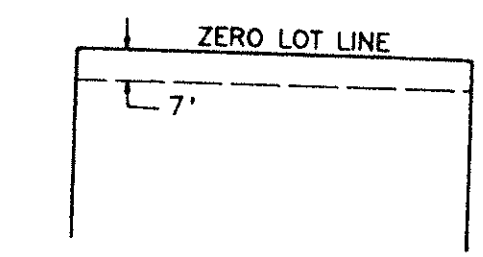
LEE ESTATES PLAT I
 (PLAT BOOK 69, PAGES 109-111)

L.W.D. CANAL E-3
 (O.R.B. 2883, PAGE 1564)

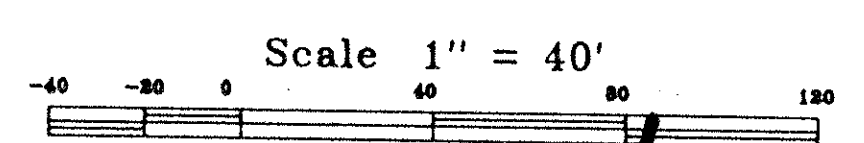
P.O.B.

P.O.C.

S.E. CORNER OF S.W. 1/4
 OF SECTION 35/44/42



NOTE: ALL LOTS HAVE A 7' MAINTENANCE EASEMENT SHOWN THUS:



SUBDIVISION * LEE ESTATES PLAT II
 BOOK 7D PAGE 125
 FLOOD MAP # 1750
 QUAD # 33 ZONING RS
 SE 90-16
 PUD NAME SAME
 36/11/12

TAZ = 349

70/125

Landmark Surveying & Mapping Inc.
 1850 FOREST HILL BOULEVARD
 PH. (407)433-5405 P.O. BOX 1000 W.P.B. FLORIDA

LEE ESTATES PLAT II